

## User Manual

# Auto-Configuration of Mobile Network Operator parameters for the

## AT-Q6



## Declaration

**Copyright: 2008 Ambiance Technology BV reserves all rights.**

The content of this guide is protected by Copyright Law and Rule. It is forbidden to copy, spread or publish the content of this user guide in any form without the authorization of Ambiance Technology BV (referred to as "AT").


Microsoft is the registered trademark of Microsoft, Inc., ActiveSync is the registered trademark of Microsoft, Inc., Outlook is the registered trademark of Microsoft, Inc., Internet Explorer is the registered trademark of Microsoft, Inc., Pocket MSN is the registered trademark of Microsoft, Inc. "AT" is the registered trade mark of Ambiance Technology BV.


Other products or company names referred to in this guide are the registered trademark(s) or registered name belonging to their owners.


"AT" reserves the right of updating and improving any products described in this guide and the content of this guide if there is any modification necessary and will not be hold to notify again.


In order to ensure your safety, please read next "Safety Precaution" and the "Safety Information" at the last page first.


## Safety Precaution


**ROAD SAFETY COMES FIRST**  
 Obey local laws. Always keep your hands free to operate the vehicle while driving. Your first consideration while driving should be road safety.


**INTERFERENCE**  
 All wireless devices may be susceptible to interference, which could affect performance.


**ENHANCEMENTS AND BATTERIES**  
 Use only approved enhancements and batteries. Do not connect incompatible products.


**CONNECTING TO OTHER DEVICES**  
 When connecting to any other device, read its user guide for detailed safety instructions.


**BACK-UP COPIES** Remember to make back-up copies or keep a written record of all important information like password(s) or Provider Network parameters.  


**EMERGENCY CALLS** Ensure the phone function is switched on and in service. Enter the emergency number and then press the Call key. Give your location. Do not end the call without permission.  









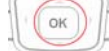
**SWITCH OFF IN HOSPITALS**  
 Follow any restrictions. Switch the device off near medical equipment.

**SWITCH OFF IN AIRCRAFT**  
 Follow any restrictions. Wireless devices can cause interference in aircraft.

**PROTECT THE ENVIRONMENT**  
 Do not dispose of batteries in a fire or as household trash. Obey the battery recycling laws.

**PROTECT THE CHILDREN**  
 Do not store any small parts of the device such as a memory card where children may access them.

This manual makes use of icons, meaning:

-  Call key.
-  End key.
-  Left soft key.
-  Right soft key.
-  **Back key.**
-  Left & right arrow keys.
-  Up & down arrow keys.
-  **OK key.**

AT-Q6 keyboard



# Contents

**Declaration** ..... 2

**Safety Precaution** ..... 2

**This manual makes use of icons, meaning** ..... 2

**AT-Q6 keyboard** ..... 2

**Introduction**..... 4

**Functions** ..... 4

**Microsoft ActiveSync Software** ..... 4

**Copying AutoConfig\_WM Software**..... 4

**Install AutoConfig\_WM Software**..... 7

**Select your Mobile Network Operator settings** ..... 10

**Remark** ..... 11

**Safety information** ..... 13

Operating environment ..... 13

Medical devices ..... 13

Precautions when using enhancements ..... 14

Additional safety information..... 14

SAR information ..... 14

# 1. Introduction

## Introduction of Auto Configuration Software

Ambiance Technology AutoConfig\_WM allows you to download on your AT-Q6 Smartphone the Mobile Network Operator parameter settings of the: Dutch, German and Belgium Mobile Network Operators.

These Mobile Network Operator parameter settings contain the GPRS- and MMS settings of the selected Mobile Network Operator. You need these Mobile Network Operator parameter settings for the use of:

- ◆ Browsing with Internet Explorer.
- ◆ Sending and receiving e-mail.
- ◆ Sending and receiving direct push mail.
- ◆ Sending and receiving MMS messages.
- ◆ Use of Pocket MSN.

Before you can start using the AutoConfig\_WM software, this manual will guide you through the installation process.



Note:

Use an USB cable and the downloaded AT AutoConfig\_WM software only.

# 2. Functions

## Functions of AutoConfig\_WM Software

Selecting of Mobile Network Operator parameter settings out of the counties:

- ◆ The Netherlands.
- ◆ Germany.
- ◆ Belgium.

# 3. Microsoft ActiveSync Software

## ActiveSync 4.5

Be sure before you want to install the "AutoConfig\_WM" Software on your AT-Q6 mobile phone, that first Microsoft ActiveSync 4.5 is installed on your Computer or Laptop and Synchronization is made before between your AT-Q6 and Microsoft Outlook.



Note:

Use only Microsoft ActiveSync 4.5 version. The latest version of Microsoft ActiveSync 4.5 is downloadable from the Microsoft website.

# 4. Copying AutoConfig\_WM Software

## Steps of copying AutoConfig\_WM Software

Copying AutoConfig\_WM Software file o be installed: "**AutoConfig\_WM.CAB**"

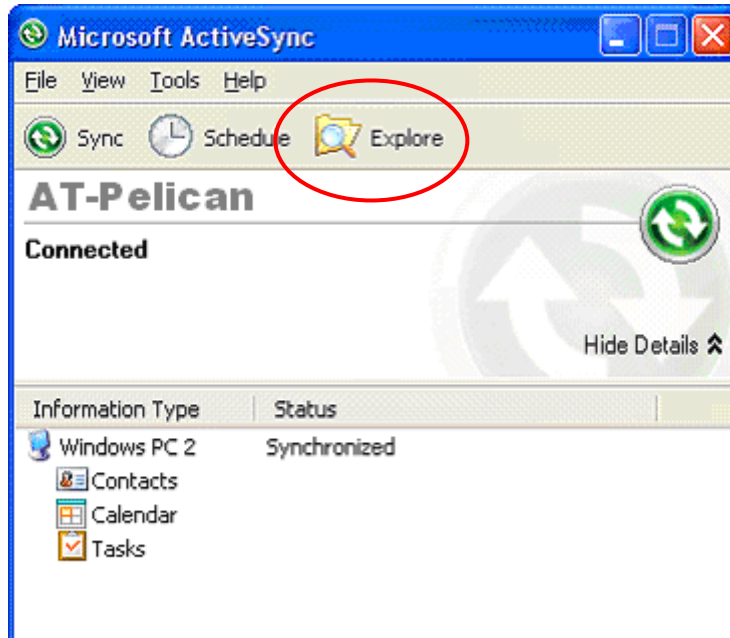
Follow the steps below to copy the "AutoConfig\_WM" Software on your AT-Q6



AutoConfig\_WM.CAB

Smartphone:

1. Connect your AT-Q6 with a USB cable on your Computer or Laptop.
2. Start ActiveSync on your PC.
3. Open "Explore" in ActiveSync program on you Computer or Laptop (see picture 1).

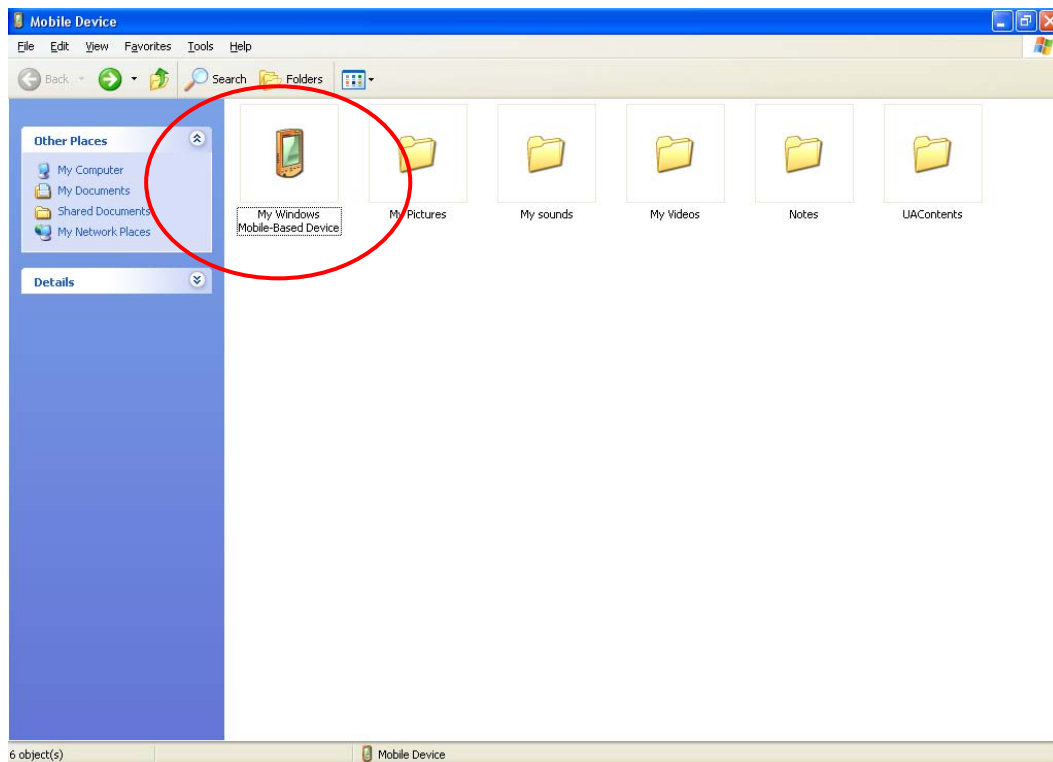


Picture 1

4. Select the "AutoConfig\_WM.CAB" file which you've download from the AT Telecom website:
5. Open the directory "My Windows Mobile-Based Device" (see picture 2).

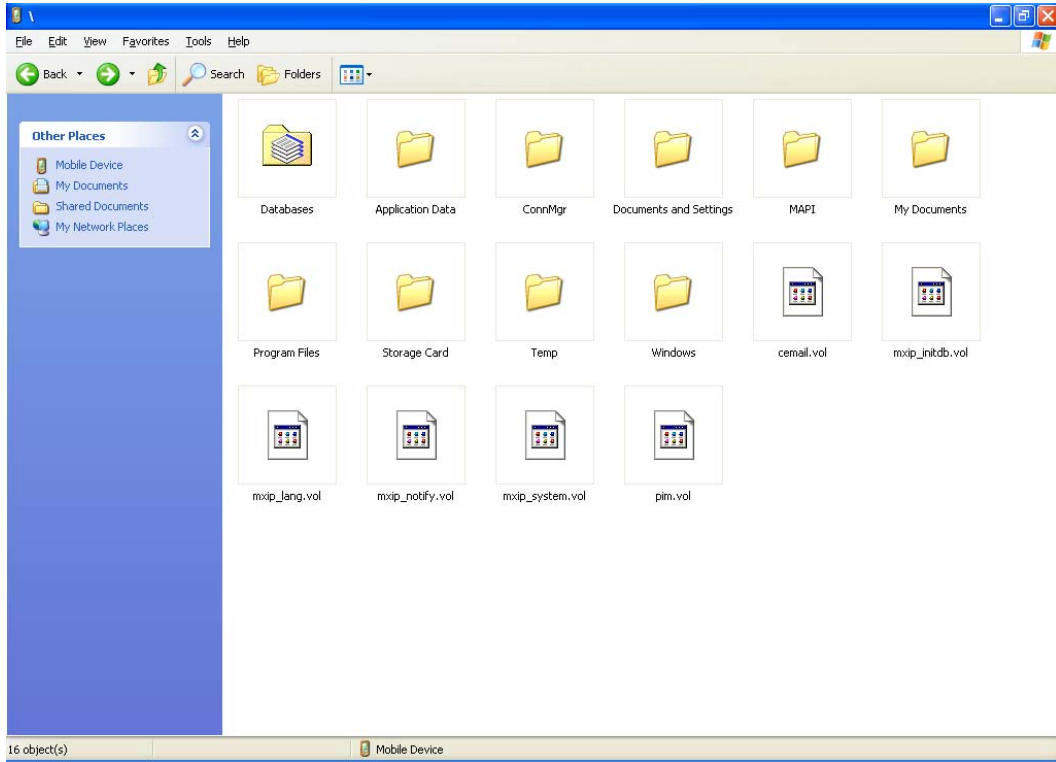


AutoConfig\_WM.CAB

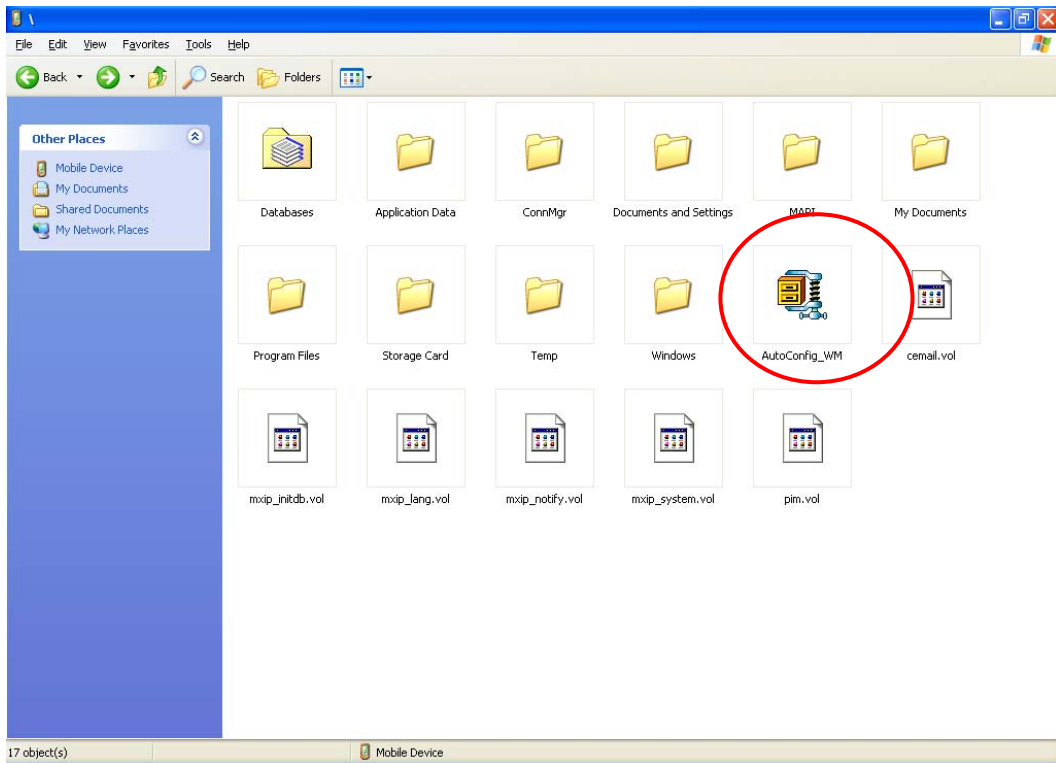


Picture 2

6. Copy "AutoConfig\_WM" file into your AT-Q6 Smartphone. Place the complete "AutoConfig\_WM" file into the directory "My Windows Mobile-Based Device" (see picture 3 + 4).



Picture 3



Picture 4

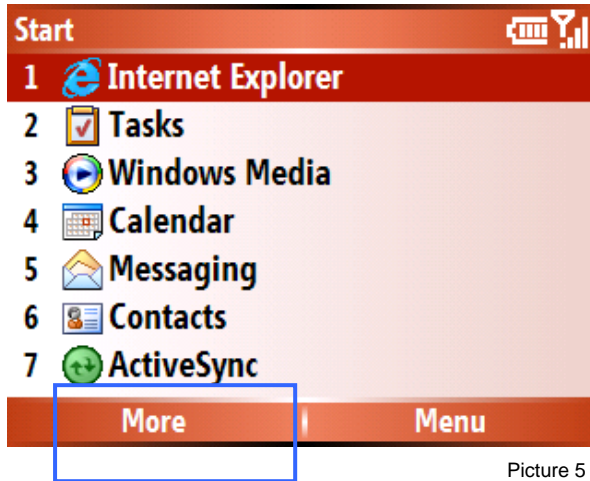
7. Now the AutoConfig\_WM file is copied to your AT-Q6 Smartphone.
8. You could disconnect your AT-Q6 from your Computer or Laptop.

## 5. Install AutoConfig\_WM Software

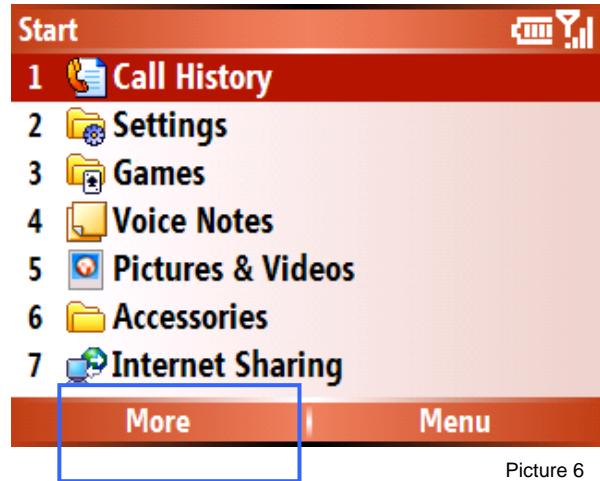
### Steps of the installation

Follow the steps below to install the "AutoConfig\_WM" Software on your AT-Q6 Smartphone:

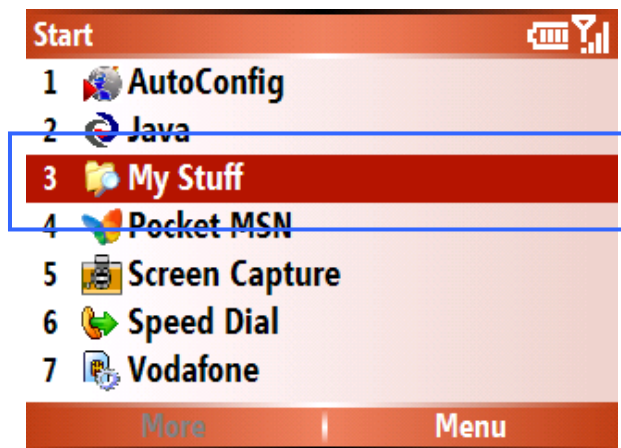
1. Open on your AT-Q6 the directory "My Stuff", via: [Start] -> [More] -> [More] -> [My Stuff] (see picture 5 till 7).



Picture 5

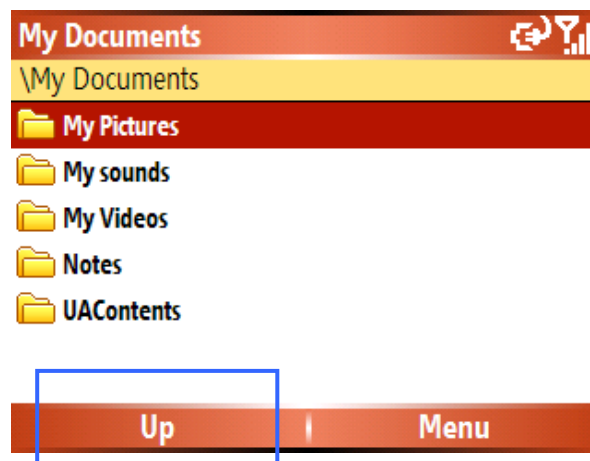


Picture 6





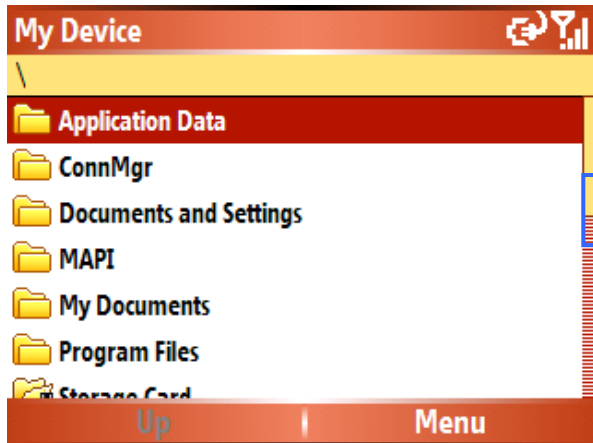
Picture 7

2. In the directory "My Documents", press once [Up] via [\*\*\*] the left soft key (see picture 8).

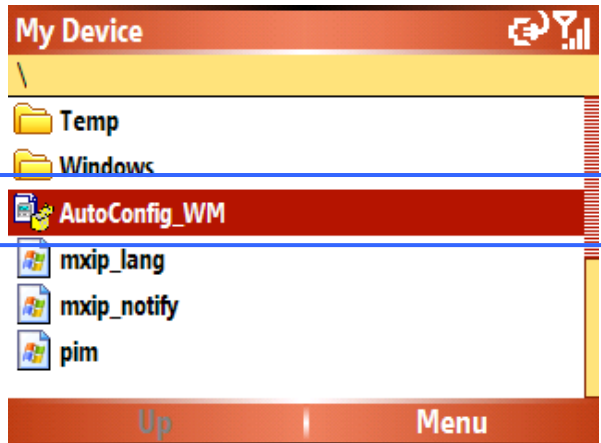


Picture 8

3. In the directory "My Device", scroll [Down] via the  down arrow key till the [AutoConfig\_WM]. Select this file by pushing on the  [OK] key (see picture 9 + 10).

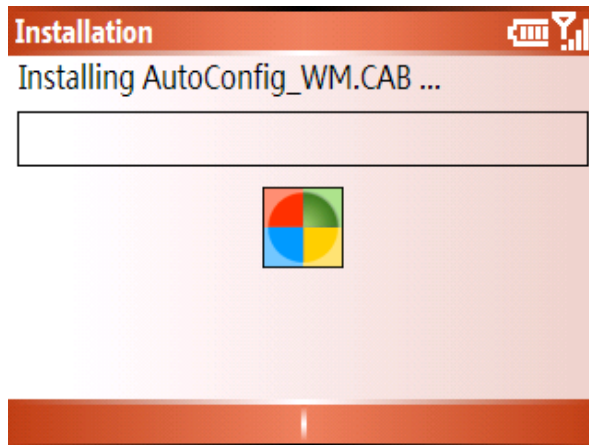


Picture 9



Picture 10

4. The "AutoConfig\_WM.CAB" file starts to be installed on your AT-Q6 Smartphone (see picture 11).

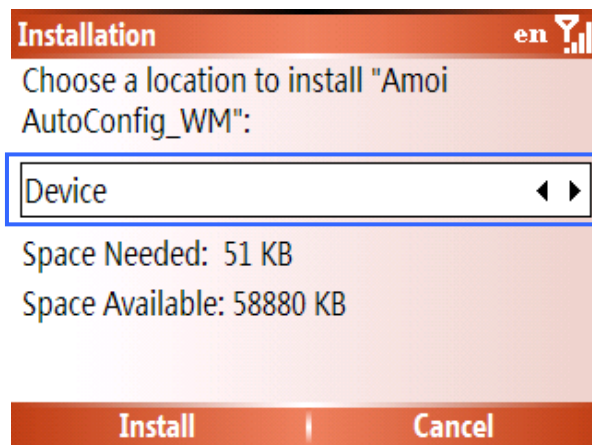


Picture 11

5. On the display comes during the "Installation" a menu with the possibility to choose the location of the installation of the "AutoConfig\_WM.CAB" software. The possibilities are:

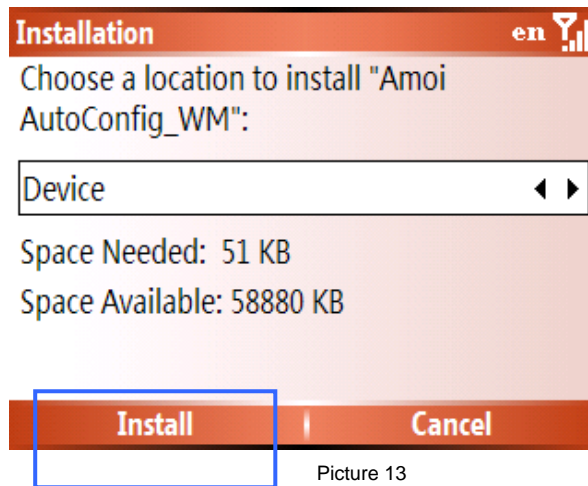
1. In the Device.
2. On the Storage Card.

Select the option [Device] with the  left or right arrow keys (see picture 12).



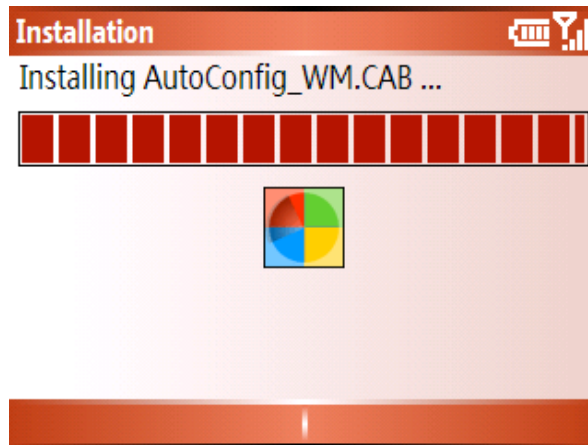
Picture 12

- Push on [Install] via: [ \* ] the left soft key (see picture 13).



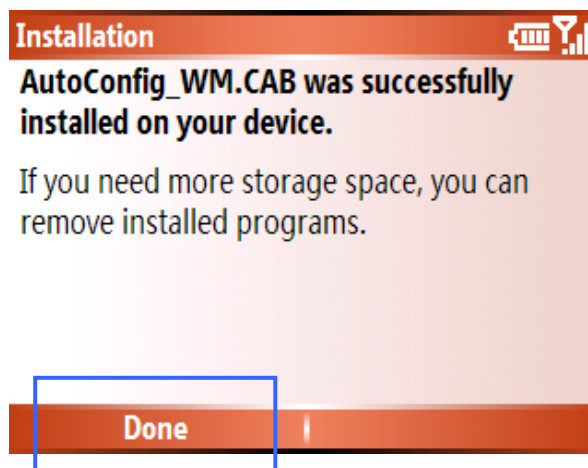
Picture 13

- The installation is now running (see picture 14).



Picture 14

- The following message comes up if the installation of the "AutoConfig\_WM.CAB" file was successfully installed on your AT-Q6 Mobile Smartphone. Push on [Done] via: [ \* ] the left soft key when ready (see picture 15).




Picture 15

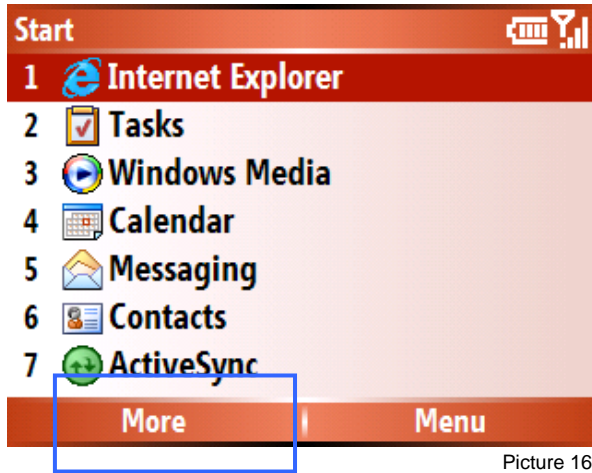
- Go to back to the main menu screen of your AT-Q6, pushing on [ ] the red end key.

## 6. Select your Mobile Network Operator settings

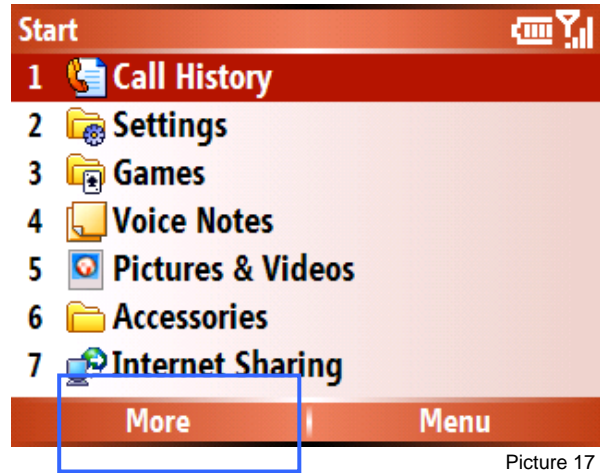
### Steps of selecting your Mobile Network Operator settings

Follow the steps below to select your preferred Mobile Network Operator settings on your AT-Q6 Smartphone:

- To open the "AutoConfig\_WM" program via: [Start] -> [More] -> [More] -> [AutoConfig] and press on  [OK]




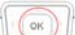
Picture 16

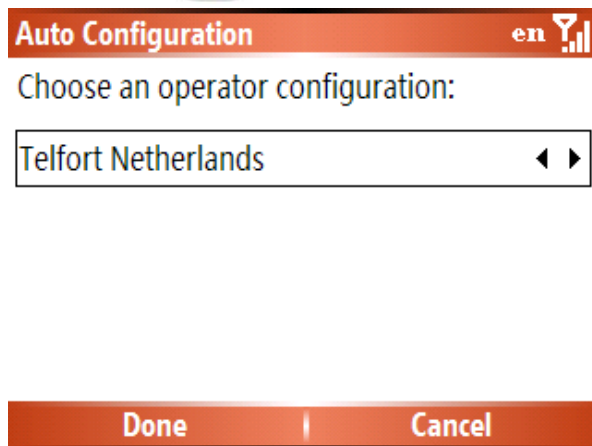


Picture 17

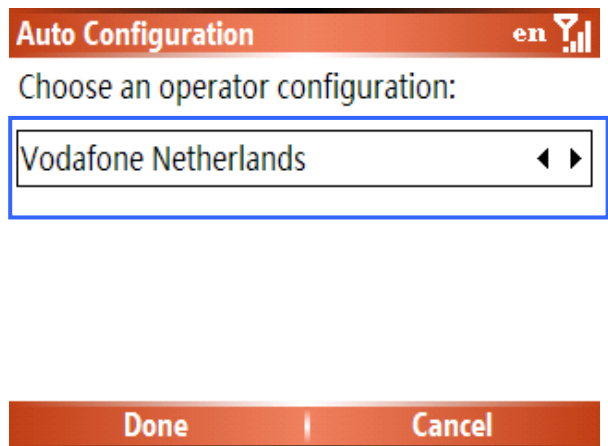


Picture 18


- Select in Auto Configuration menu the preferred Mobile Network Operator by using the  left of right arrow keys and press  on the [OK] key to confirm your selected preferred Mobile Network Operator settings (see picture 19)

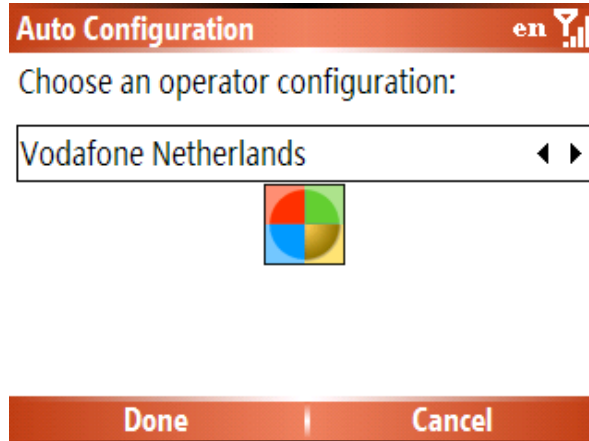


Picture 19



Picture 20

3. After you've pushed on the  [OK] key, your preferred Mobile Network Operator settings will be stored in your AT-Q6 Smartphone. The Auto Configuration application will be closed automatically and the AT-Q6 will go back to the main menu (see picture 21).

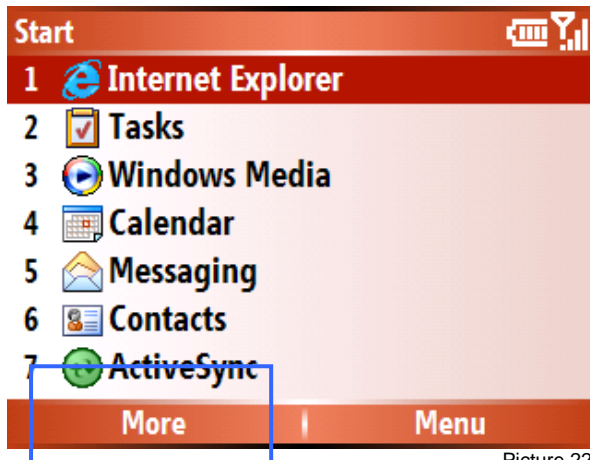


Picture 21

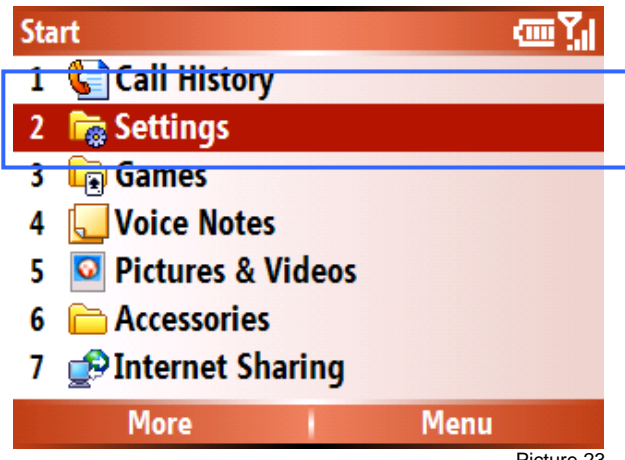
## 7. Remark

### Remark AutoConfig\_WM Mobile Network Operator parameter settings

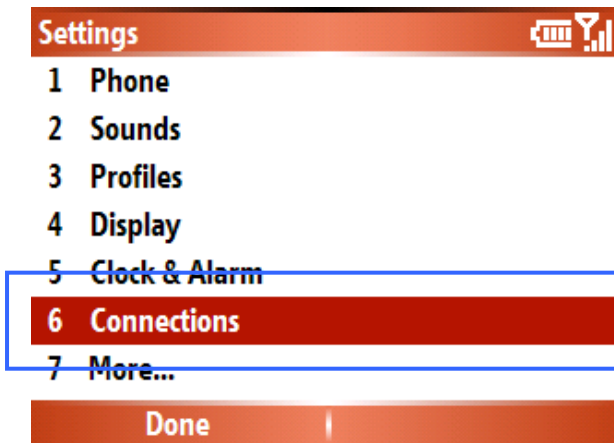
1. It's possible if you selected your preferred Mobile Network Operator via the Auto configuration application that more as one APN is programmed in the settings of the "GPRS" menu. You need to delete the APN(s) which are not connected to you subscription.
2. To delete needless APN(s), please follow the following procedure:
  - a. Push on: [Start] -> [More] -> [Settings] -> [Connections] -> [GPRS] (see picture 22 till 25).



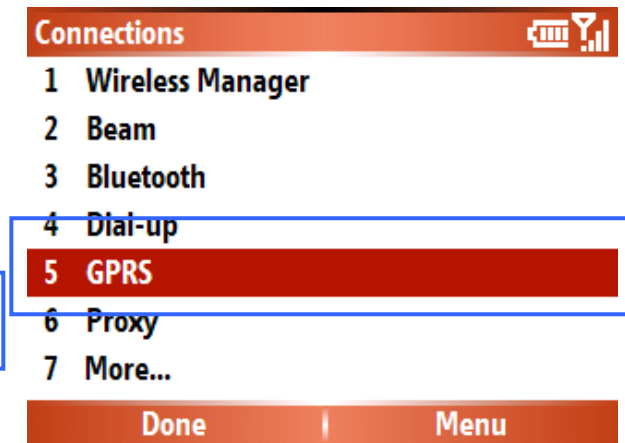
Picture 22



Picture 23

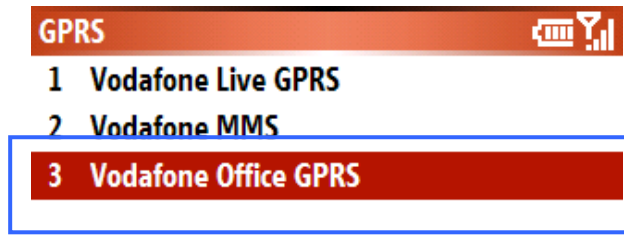


Picture 24



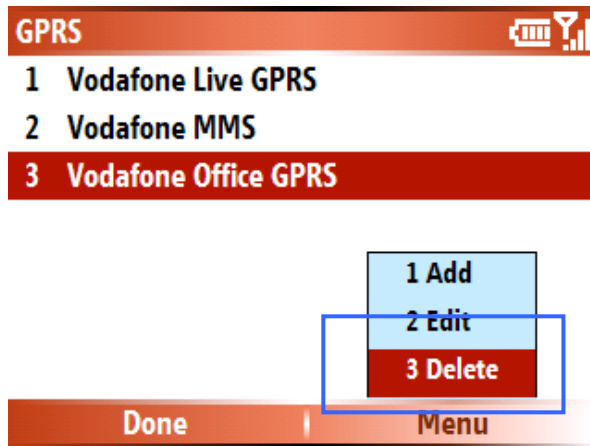
Picture 25

- b. Select the needless APN which you want to delete and push on [Menu] via [ **•••** ] the left soft key (see picture 26).




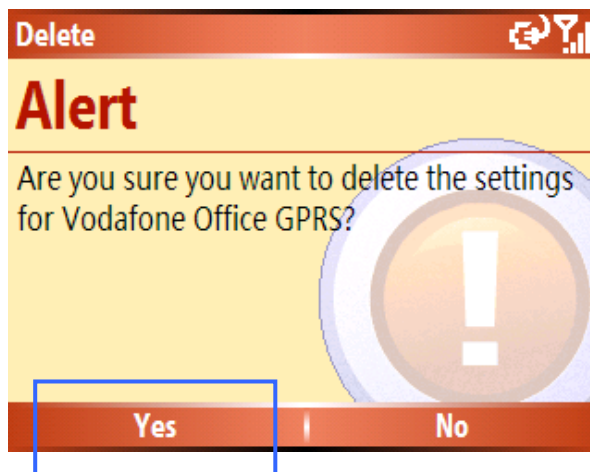
Picture 26

- c. Select [Delete] and push on the  [OK] key (see picture 27).




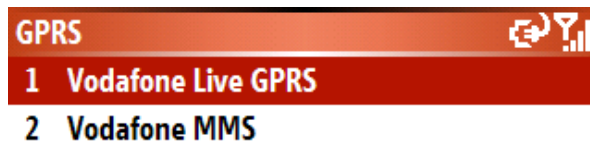
Picture 27

- d. If you pushed on  the [OK] key, the following message appears on the screen. Select [Yes] via [ **•••** ] the left soft key (see picture 28).





Picture 28

- e. If the selected needless APN settings are deleted please push on the [Done] via [  ] the left soft key (see picture 29).



Picture 29

- f. Your AT-Q6 Mobile Smartphone is now programmed with your preferred Mobile Network Operator parameter settings and ready for use. You can go to the main menu screen, by pushing on [  ] the red end key.

 **Warning:**  
 If you change your SIM card of your preferred Mobile Network Operator with another SIM card of another Mobile Network Operators, you need to select via the Auto Configuration application, the correct new Mobile Network Operator parameter settings again. Follow the procedure which is written in this manual at “Steps of selecting your Mobile Network Operator settings” (page 10).

 **Meaning:**  
**APN = Access Point Name**, is the name of an access point for the settings which are used for a GPRS connection. If you don't know which APN is connected on your subscription, please contact your Mobile Network Operator.

 **Tip:**  
 For the parameter settings, for use of your e-mail with Microsoft Outlook, Direct Push Mail or Pocket MSN, please contact your Internet Service Provide or your IT department.

## 8. Safety information

### Operating environment

Remember to follow any special regulations in force in any area where you use your phone.

- ◆ Switch off your phone near a refueling point, bunker, chemical plant or blasting. Follow any restrictions. Not following them may cause an explosion.
- ◆ Your phone can cause interference and danger in aircraft. Therefore, ensure that your phone is switched off during the flight.
- ◆ Put your phone at a special rack while driving. Do not put it at the seat or any places where it may drop. Do not use your wireless phone while driving. If you do need to use it, then use the hands-free car kit or park the car first.

### Medical devices

Operation of any radio transmitting equipment, including wireless phones, may interfere with the functionality of inadequately protected medical devices. Consult a physician or the manufacturer of the medical device to determine if they are adequately shielded from external RF energy or if you have any questions. Switch off your phone in health care facilities when any regulations posted in these areas instruct you to do so. Hospitals or health care facilities may be using equipment that could be sensitive to external RF energy.

## Pacemaker

Pacemaker manufacturers recommend that a minimum separation of 6 inches (15.3cm) be maintained between a wireless phone and a pacemaker to avoid potential interference with the pacemaker.

**To minimize the potential for interference, persons with pacemakers should:**

- ◆ Always keep the phone more than 6 inches (15.3cm) from their pacemaker when the phone is switched on.
- ◆ Not carry the phone in a breast pocket.
- ◆ Hold the phone to the ear opposite to the pacemaker.



Warning:

If you have any reason to suspect that interface is taking place, switch off the phone immediately. Consult the physician for more information.

## Hearing aid

Your phone may interfere with some hearing aids. If interference occurs, consult the manufacturer of the hearing aids.



## Precautions when using enhancements

- + Keep all enhancements (SIM card, memory card or battery etc.) out of reach of small children.
- + Ensure that your phone is switched off and is not connected to a charger before you remove the battery.
- + Your phone and its enhancements are not water-resistant, keep them dry.
- + When you disconnect the power cord of any enhancement, grasp and pull the plug, not the cord.
- + If your phone, battery or charger does not work properly, contact the nearest authorized service facility for service.



## Additional safety information

- + To avoid damage to your hearing, do not increase the volume too high when using the earphone.
- + DO NOT attempt to disassemble the phone and its battery by any unauthorized persons.



## SAR information

When you don't use the phone, it is advisable to switch off the phone and take out the battery for saving resource and avoid phone radiation.

### Exposure to radio-frequency energy

#### (SAR information)

This phone meets European Union (EU) requirements concerning exposure to radio waves. Your mobile phone is a radio transmitter and receiver. It is designed and manufactured to not exceed the limits for exposure to radio-frequency (RF) energy, as recommended by the EU Council. These limits are part of comprehensive guidelines and establish permitted levels of RF energy for the general population. The guidelines were developed by independent scientific organizations through periodic and thorough evaluation of scientific studies. The limits include a substantial safety margin designed to ensure the safety of all persons, regardless of age and health.

The exposure standard for mobile phones employs a unit of measurement known as Specific Absorption Rate (SAR). The SAR limit recommended by the EU Council is 2.0W/kg. SAR tests are conducted using standard operating positions with the phone transmitting at its highest certified power level in all tested frequency bands. Although the SAR is determined at the highest certified power level, the actual SAR level of the phone while operating can be well below the maximum value. This is because the phone is designed to operate at multiple power levels so as to use only the power required to reach the network. In general, the closer you are to a base station, the lower the power output of the phone.

\* The SAR limit for mobile phones used by the public is 2.0 watts/kilogram (W/kg) averaged over ten grams of body tissue. The limit incorporates a substantial margin of safety to give additional protection for the public and to account for any variations in measurements. The SAR values may vary, depending on national reporting requirements and the network band. According to CE standard, the maximum SAR value of this phone is 0.366W/kg.

March 2008  
Ambiance Technology, The Netherlands